

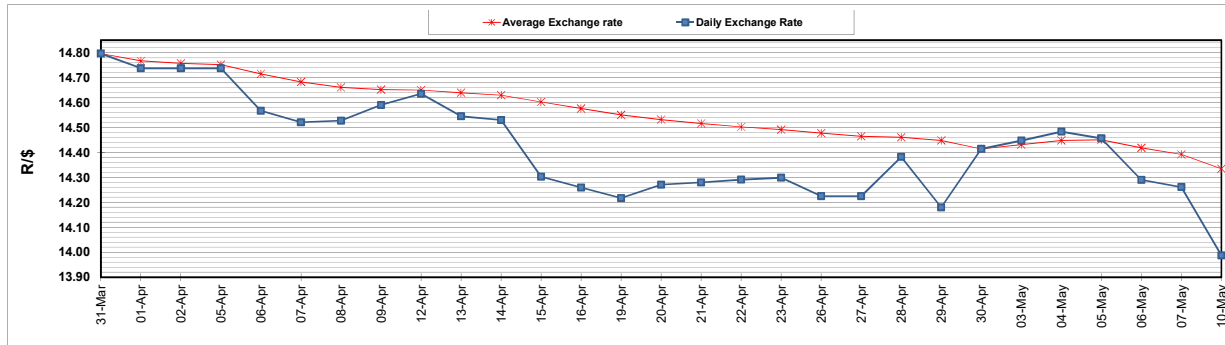
	PETROL 95 ULP	PETROL 93 ULP & LRP	DIESEL 0.05%	DIESEL 0.005%	ILL. PAR.
GAUTENG PUMP PRICE (SA c/l) AS FROM 05/05/2021	1,723.000	1,701.000	-	-	-
WHOLESALE PRICE (SA c/l) AS FROM 05/05/2021	-	-	1,446.620	1,450.020	857.488
SINGLE NATIONAL MAXIMUM RETAIL PRICE	-	-	-	-	1,076.000
BASIC FUEL PRICE - 10/05/2021 (SA c/l)	719.021	710.547	681.438	684.722	669.176
PRESS RELEASE CONTRIBUTION TO BFP 05/05/2021 - 10/05/2021 (SA c/l)	727.170	715.170	659.630	663.030	644.128
UNIT OVER/(UNDER) RECOVERY - 10/05/2021 (SA c/l)	8.149	4.623	(21.808)	(21.692)	(25.048)
AVERAGE BASIC FUEL PRICE 30/04/2021 - 10/05/2021	736.803	725.003	688.447	692.622	678.212
AVERAGE UNIT OVER/(UNDER) RECOVERY 30/04/2021 - 10/05/2021	(5.776)	(5.976)	(15.532)	(16.735)	(24.227)

### ANALYSIS MOVEMENT OF AVERAGE OVER/(UNDER) RECOVERY

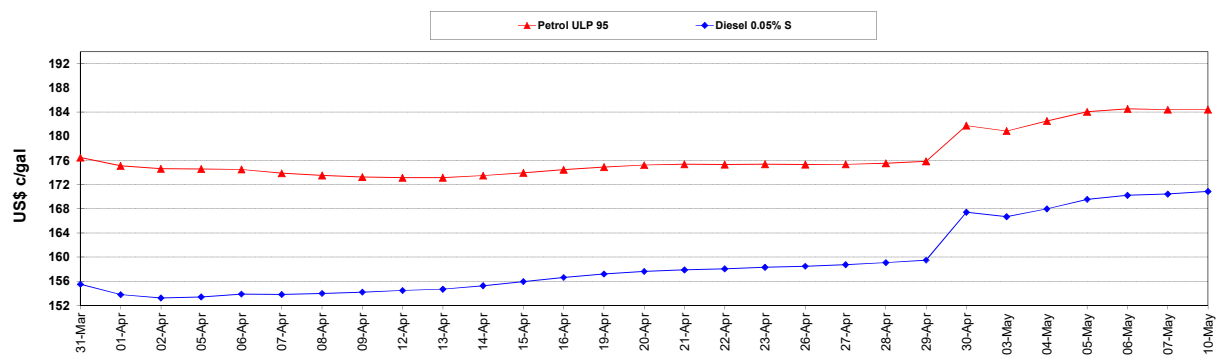
	PETROL 95	PETROL 93	DIESEL 0.05%	DIESEL 0.005%	ILL. PAR.
- MOVEMENT IN INTERNATIONAL PRODUCT PRICES	(11.615)	(11.722)	(20.987)	(22.224)	(29.602)
- MOVEMENT IN EXCHANGE RATE	5.839	5.746	5.456	5.489	5.375
AVERAGE UNIT OVER/(UNDER) RECOVERY 30/04/2021 - 10/05/2021	(5.776)	(5.976)	(15.532)	(16.735)	(24.227)

### R/\$ EXCHANGE RATE - (R/\$13.9875- 10/05/2021)

#### EXCHANGE RATE USED IN BASIC FUEL PRICE



#### INTERNATIONAL PRODUCT PRICES OF BASKET USED IN BASIC FUEL PRICE



#### BASIC FUEL PRICE IN SA CENTS PER LITRE

